

ADV

DWBE oil / water Shell and Tube Heat Exchanger DWBE翅片式油水冷却器



Oil / water coolers of perking-segment style 翅片式油水冷却器

Dimension of DWBE 外形尺寸



PRODUCT DESCRIPTION

DWBE series is a kind of perking-wing-style heat exchangers, which are suitable for wide industrial application. This series has greater cooling surface. As a tube-swalling technology is adopted between brass tubes for heat exchange and perking wings, making both of which touch each other closely, they increase performance of heat exchange remarkably than existing heat exchages.

PRODUCT FEATURES

- Heat exchanging fins and brass tubes ensure the utmost effect of heat exchange
- Large oil connectors for minimum flow resistance
- Removable end caps for easy cleaning of the tubes
- High-quality materials
- Max. pressure: oil 16 bar/water 10 bar
- Full range of accessories available
- Inventory available

OPTIONS

- Sea water cooler
- Applied to compressed air
- Water-water application
- Stainless steel version or chemically nickel plated

Materials 材质

Shell, Mounting bracket, Barrels 外壳, 安装支架, 挡板	Standard 标准
End plates 端板	Steel 钢
Cooling fins 散热翅片	Aluminium or Copper 铝或铜
Tubes 铜管	Copper, Nickel 铜, 镍
End caps 端盖	Castiron 铸铁
Gaskets 垫圈	Nitrile rubber 丁腈橡胶

产品描述

DWBE 系列是管翅式热交换器的一种，适合很多工业应用。这个系列具有更大的冷却表面。换热铜管与翅片之间采用胀管工艺，实现铜管和翅片紧密接触，比现有的换热器显著提高了换热性能。

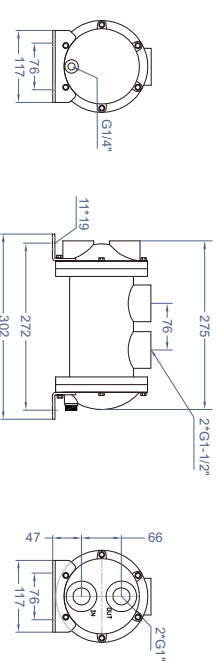
产品特点

- 换热翅片和铜管可以确保最大程度的换热效果
- 油路接口大可以降低流动阻力
- 端盖可拆卸/便于管路的清洗
- 选用高品质的材料
- 最大压力: 油16bar / 水10bar
- 全系列附件
- 充足库存

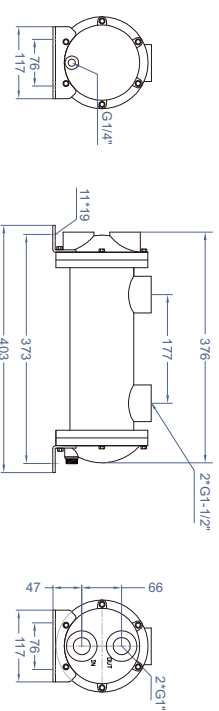
备注

- 海水冷却
- 应用于压缩空气
- 应用于水-水
- 不锈钢版或化学镀镍

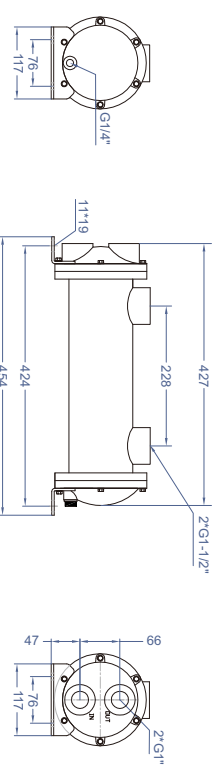
DWBE-408-T
1.3m²



DWBE-412-T
2.1m²



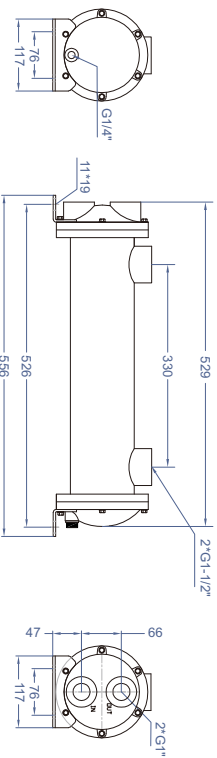
DWBE-414-T
2.5m²



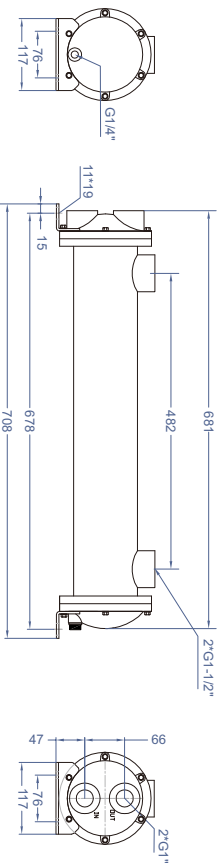
» Dimension of DWBE 外形尺寸

» Dimension of DWBE 外形尺寸

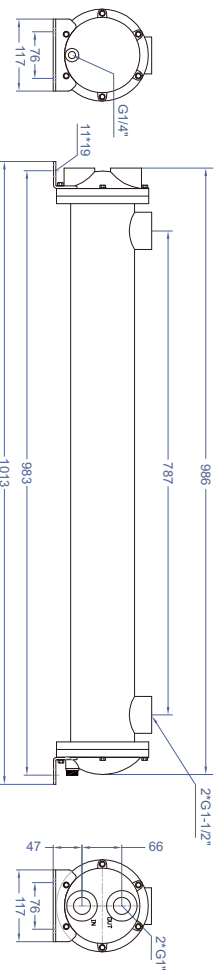
DWBE-418-T
3.1m²



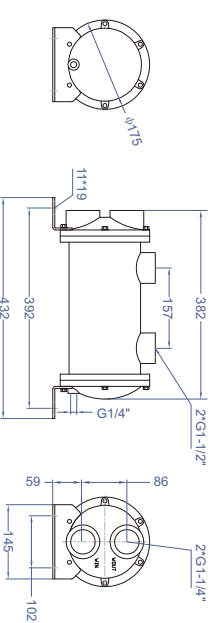
DWBE-424-T
4.4m²



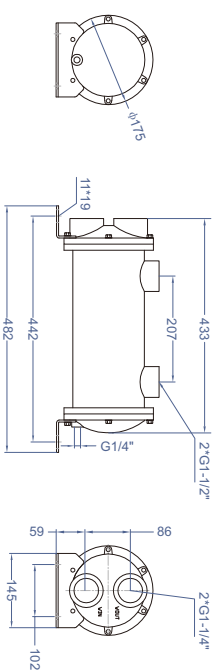
DWBE-436-T
6.7m²



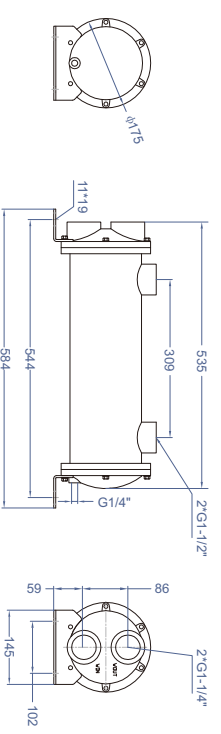
DWBE-512-T
4.3m²



DWBE-514-T
5.1m²



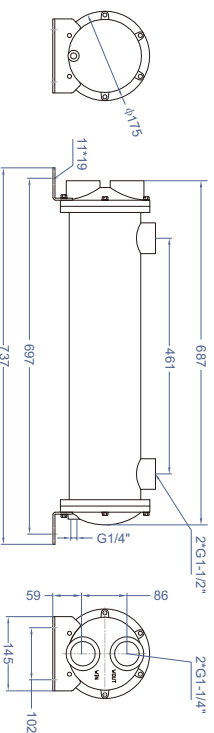
DWBE-518-T
6.7m²



Dimension of DWBE 外形尺寸

Model selection 选型

DWBE-524-T
9.0m²



For deviating oil outlet temperatures, water inlet temperatures and viscosities, the calculation has to be made as follows :

Here
 Heat to be dissipated (AW) = 17 kW
 Oil flux (V) = 80 L/min
 Oil outlet temp. (t_{oil out}) = 45°C
 Water inlet temp. (t_{water in}) = 25°C
 Oil type = ISO 68
 Effective heat to be dissipated = kW eff.

对于不同的油出口温度、水入口温度和粘度，需要进行以下计算：

这里
 散热量(AW) = 17 kW
 油流量(V) = 80 L/min
 油出口温度(t_{油出口}) = 45°C
 水入口温度(t_{进水}) = 25°C
 油品 = ISO 68
 有效散热量 = kW eff.

1. The viscosity correction parameter is calculated as follows:

Temperature difference T (°C) =

$$\frac{AW (kW) \times 34.1}{Q (L / mm)} = 7.2$$

温差 T (°C) =

$$\frac{AW (kW) \times 34.1}{Q (L / mm)} = 7.2$$

Average oil temp. therefore (°C) =

$$\frac{t_{oil out} + \Delta t + t_{oil out}}{2} = 49^\circ C$$

因此，平均油温(°C) =

$$\frac{t_{油出口} + \Delta t + t_{油出口}}{2} = 49^\circ C$$

2. From oil manufacturer's data for ISO 68 :
 Viscosity at 49°C = 38 cSt

2. 根据 ISO68 号油的数据:
 49°C 时的粘度 = 38 cSt

3. From viscosity correction table B :
 38 cSt = 1.11

3. 根据粘度修正表B:
 38 cSt = 1.11

AW eff. =
 AW (kW) x 25 x viscosity (cSt). B

$$= \frac{17 \times 25 \times 1.11}{20} = 23.6 \text{ kW}$$

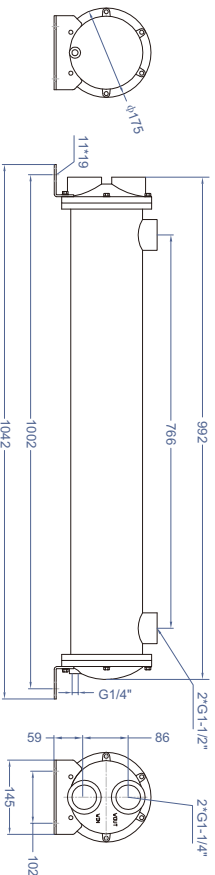
AW eff. =
 AW (kW) x 25 x 粘度 (cSt) 表 B

$$= \frac{17 \times 25 \times 1.11}{20} = 23.6 \text{ kW}$$

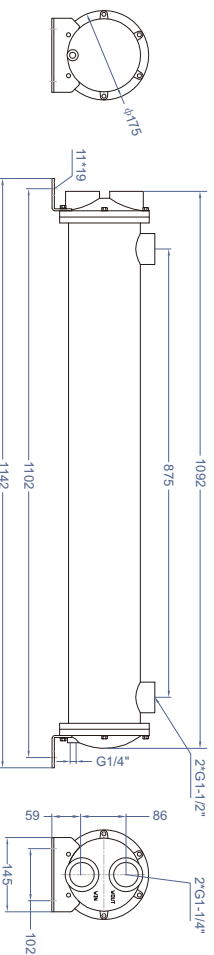
From table A, at an oil flux of 80 L/min and 23.6 kW, the result is
 Cooler 418 -T

依据表A，当油流量 80 升/分钟 和 23.6 kW时，
 结果为：冷却器 418-T

DWBE-536-T
13.7m²



DWBE-548-T
15.0m²



Performance curve of DWBE 性能曲线

Viscosity correction coefficient table 粘度修正系数表

Table A 表A

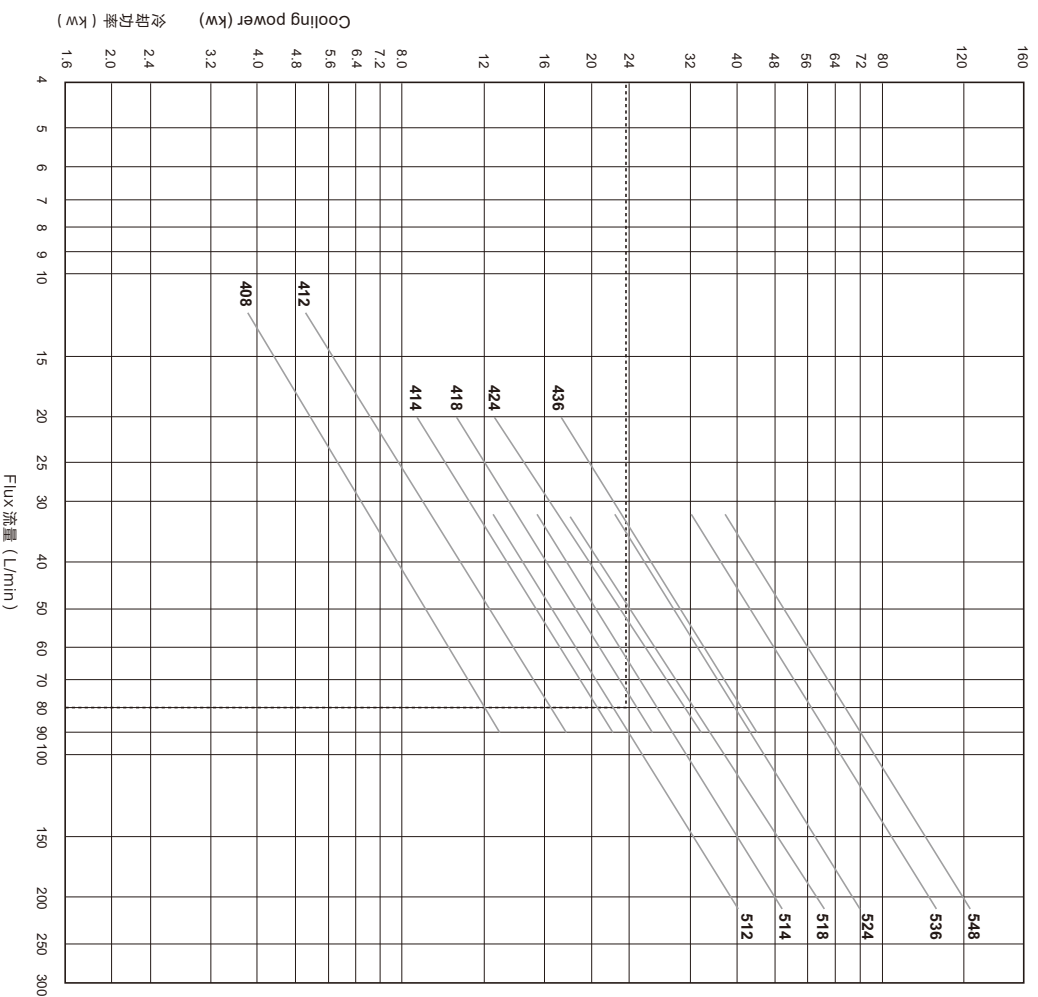
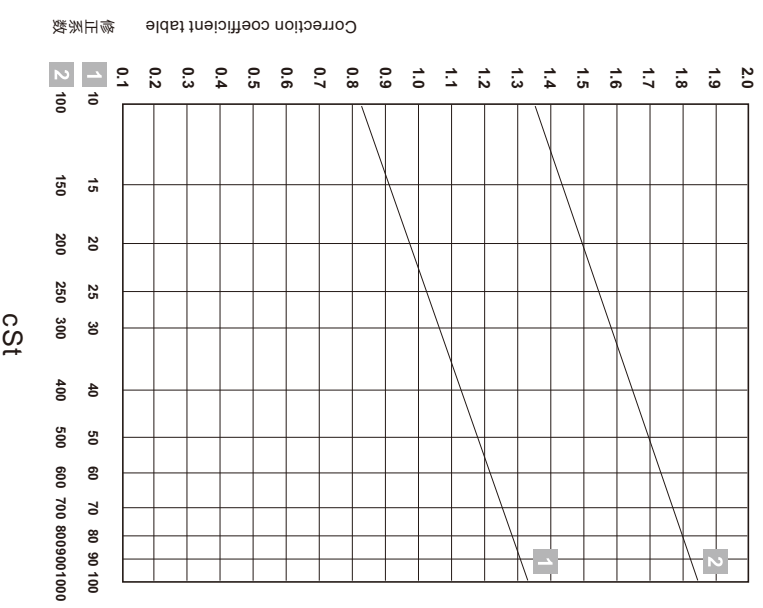


Table B 表B

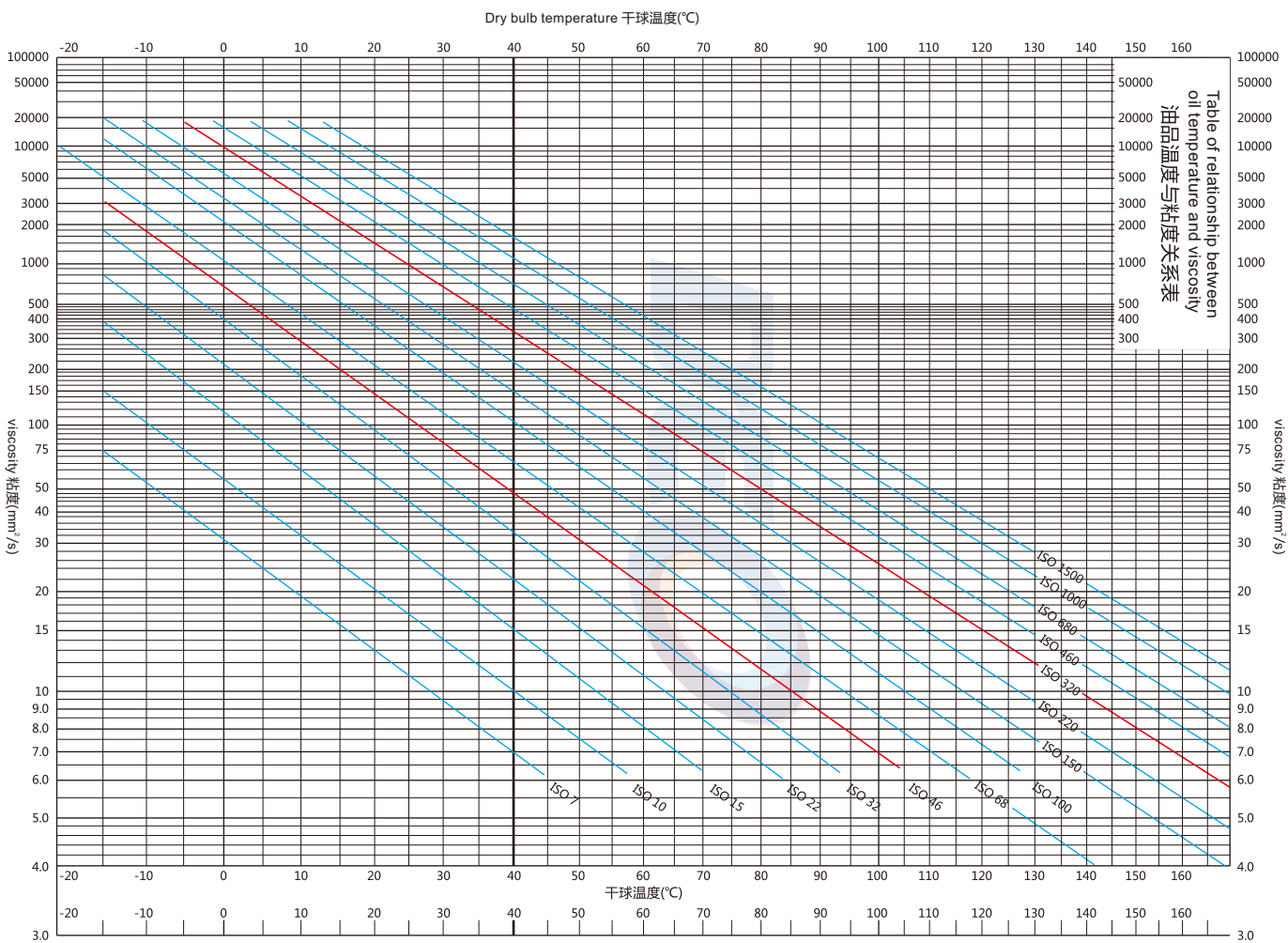


Choice of Cooler

The performance data shown is based on a water inlet temperature of 25°C and an oil outlet temperature of 50°C, together with an oil viscosity of 20.6 cst. For different viscosities, the correction parameter can be read off from the performance curve below.

冷却器的选择

图中所示的性能数据是基于水入口温度 25°C 和油出口温度 50°C, 油的粘度 20.6 cst. 对于不同的粘度, 可依据以下性能曲线读出修正系数。



Contact Us For More Information:

Changzhou ADV Heat Exchanger Co., Ltd

No.29 Xuema Road, Xueyan, Wujin District,
213169 Changzhou, Jiangsu

Tel: +86-519-85181789

Cell: (+86) 13485044039

Email: Sales@advcooler.com